

CRC rail clamp



Properties

- Lifting capacity and jaw opening are clearly engraved on the housing.
- Equipped with a safety mechanism that prevents the rail from sliding out of the jaw during lifting.
- The clamp locks in open and closed position.

Applications

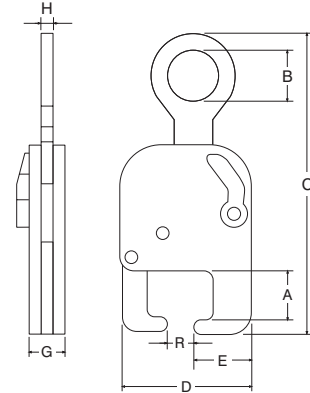
- For vertical transport of (railway) rail profiles.

Option

- Other capacities and jaw opening.
- Other profile dimensions on request.

Norm:

- EN12100-1/2, EN13155, AS4991, ASME-B30,20



Type	WLL (kg)	Jaw opening R (mm)	A (mm)	B (mm)	C (mm)	D (mm)	E (mm)	G (mm)	H (mm)	Weight (kg)	ProductId
CRC-1.5	1500	40-75	64	65	390	170	70	48	16	8	3314015

CPH pipe lifting clamps



Properties

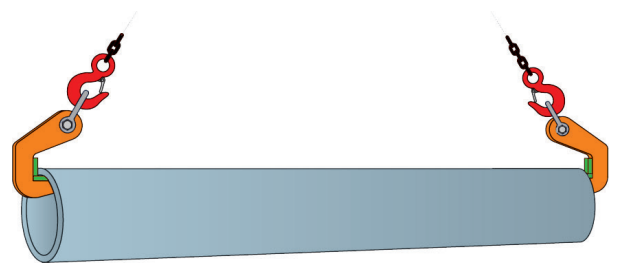
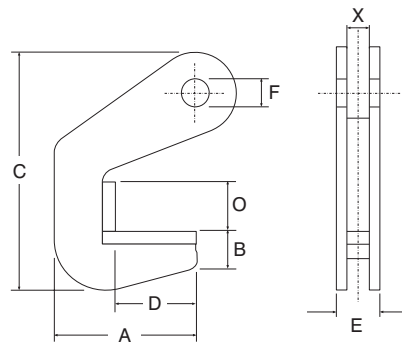
- Jaw is covered with a special high quality pressure resistant plastic.
- These clamps must always be used in pairs.
- Exclusive fasteners.

Application

- For horizontal lifting and transporting of steel and concrete pipes without damaging the product.

Norm:

- EN12100-1/2, EN13155, AS4991, ASME-B30,20



Type	WLL/pair (kg)	Jaw opening O (mm)	A (mm)	B (mm)	C (mm)	D (mm)	E (mm)	F (mm)	X (mm)	Weight/pair (kg)	ProductId
CPH-1.5	1500/2	40	120	32	185	70	41	16	23	3.2/2	3313025
CPH-3.0	3000/2	40	120	32	185	70	41	16	23	3.2/2	3313027
CPH-4.0	4000/2	50	140	58	180	70	41	26	23	6.0/2	3313029
CPH-6.0	6000/2	50	140	58	180	70	41	26	23	6.0/2	3313031
CPH-8.0	8000/2	70	140	58	200	70	45	26	25	7.2/2	3313033
CPH-10.0	10000/2	70	140	58	200	70	86	26	44	10.0/2	3313034
CPH-12.0	12000/2	70	140	58	200	70	86	26	44	12.0/2	3313035
CPH-15.0	15000/2	70	155	75	250	70	100	26	59	18.0/2	3313037
CPH-20.0	20000/2	70	155	75	250	70	100	26	59	20.0/2	3313039